



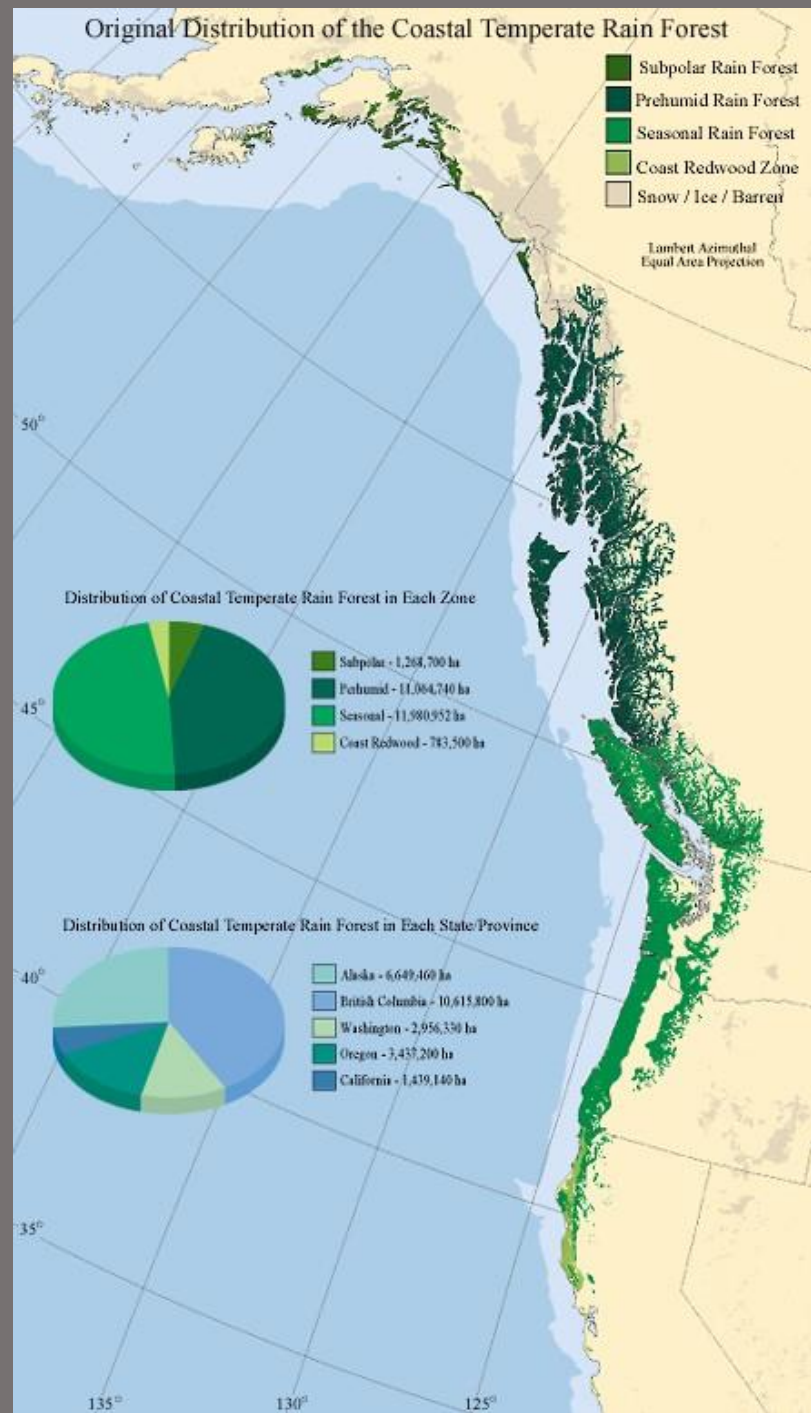
# Rare Plants, Invasive Species, and Citizen Science using iNaturalist

**PWS Natural History Symposium**

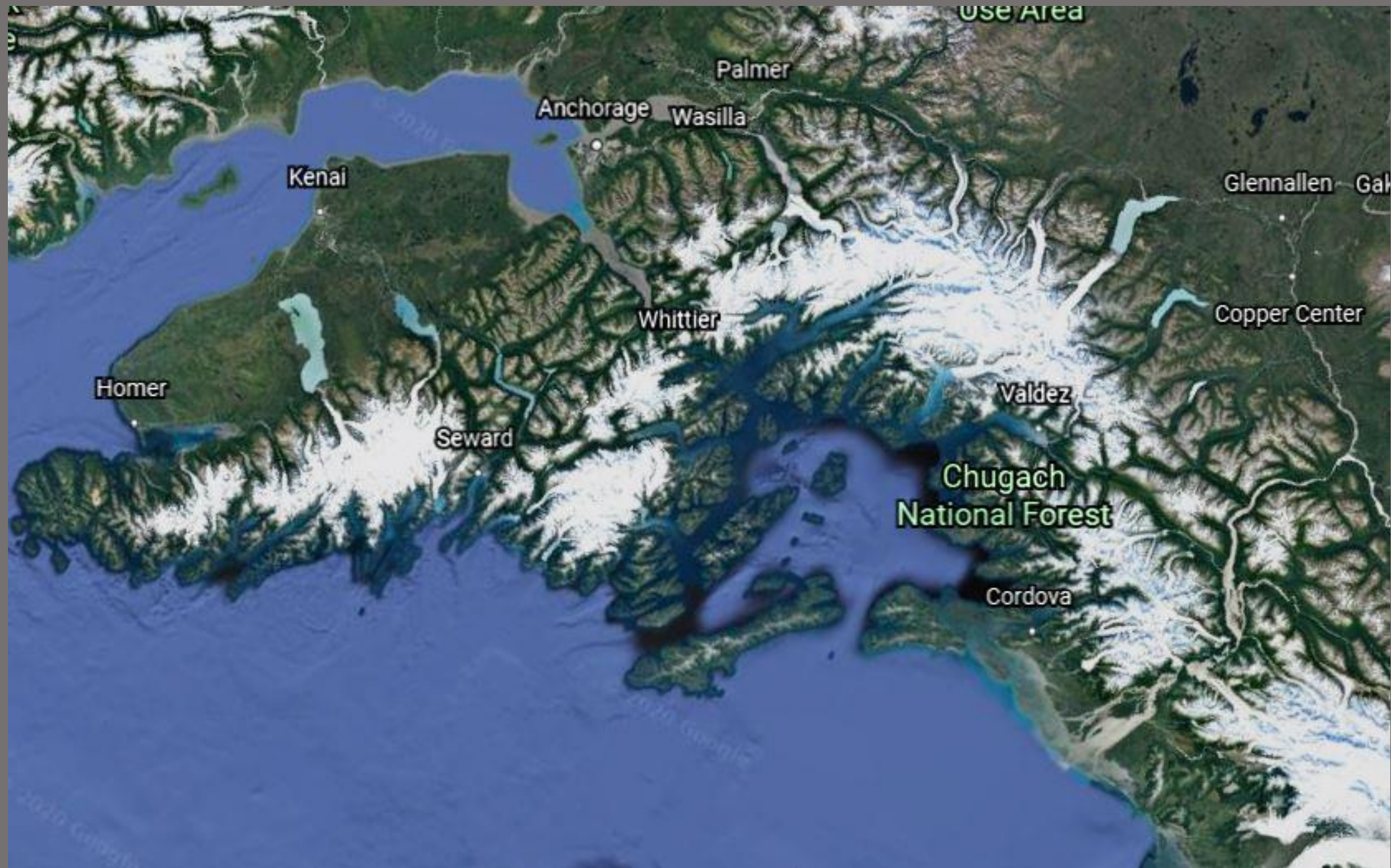
**Kate Mohatt**

**Ecologist, Chugach National Forest**



















# Prince William Sound

## Shorelines rare plant surveys

Sitka Spruce/Western/Mountain Hemlock  
Dominated Forests with a few pockets of Alaska  
Yellow Cedar



Intriguing  
Upper  
Beach  
Meadows



Luxurious Fens



Rare Plant  
survey  
locations





Rare plant  
occurrence  
locations







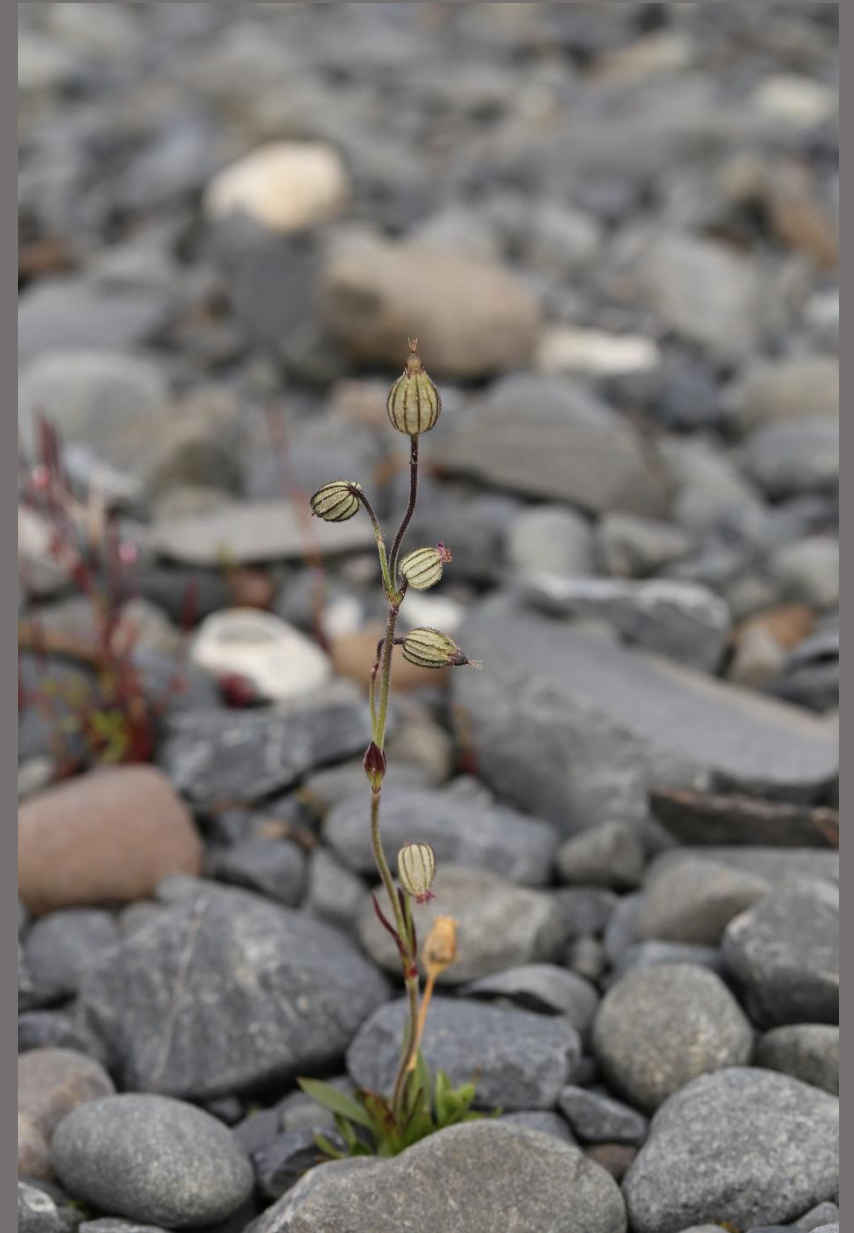








*Romanzoffia unalaschcensis* – “Unalaska mist-maid”



*Silene uralensis*- “apetalous catchfly”







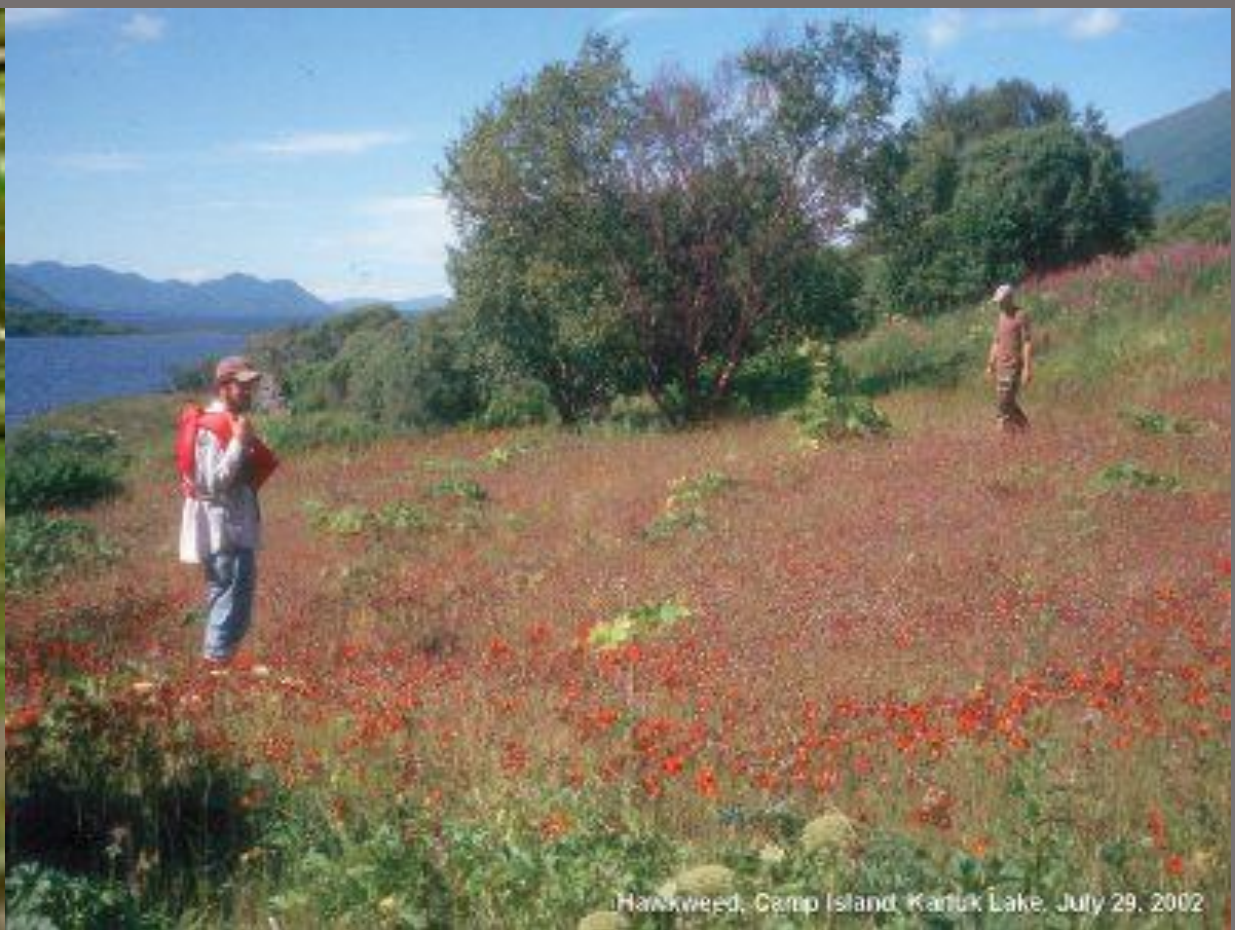


*Cryptogramma crisper*











**Figure 1: Known locations of terrestrial invasive plants with invasiveness rankings of over 55**

Prince William Sound Zone - Chugach National Forest



**Landowner:**

- |                                |                 |                             |                        |                       |                                    |
|--------------------------------|-----------------|-----------------------------|------------------------|-----------------------|------------------------------------|
| National Forest                | State of Alaska | Chugach Alaska Native Corp. | Cook Inlet Region Inc. | Tatitlek Native Corp. | Invasive species locations         |
| National Forest (Surface only) | Privately owned | Chenega Native Corp.        | Eyak Native Corp.      | Alaska Highways       | Prince William Sound Zone Boundary |

0 25 50 100 Miles



















Hobo Bay Campsite Dandelions



# Invasive Species Known Locations - Whittier, AK



## Landowner



National Forest



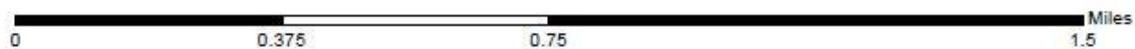
State of Alaska



Privately owned



Invasive species locations

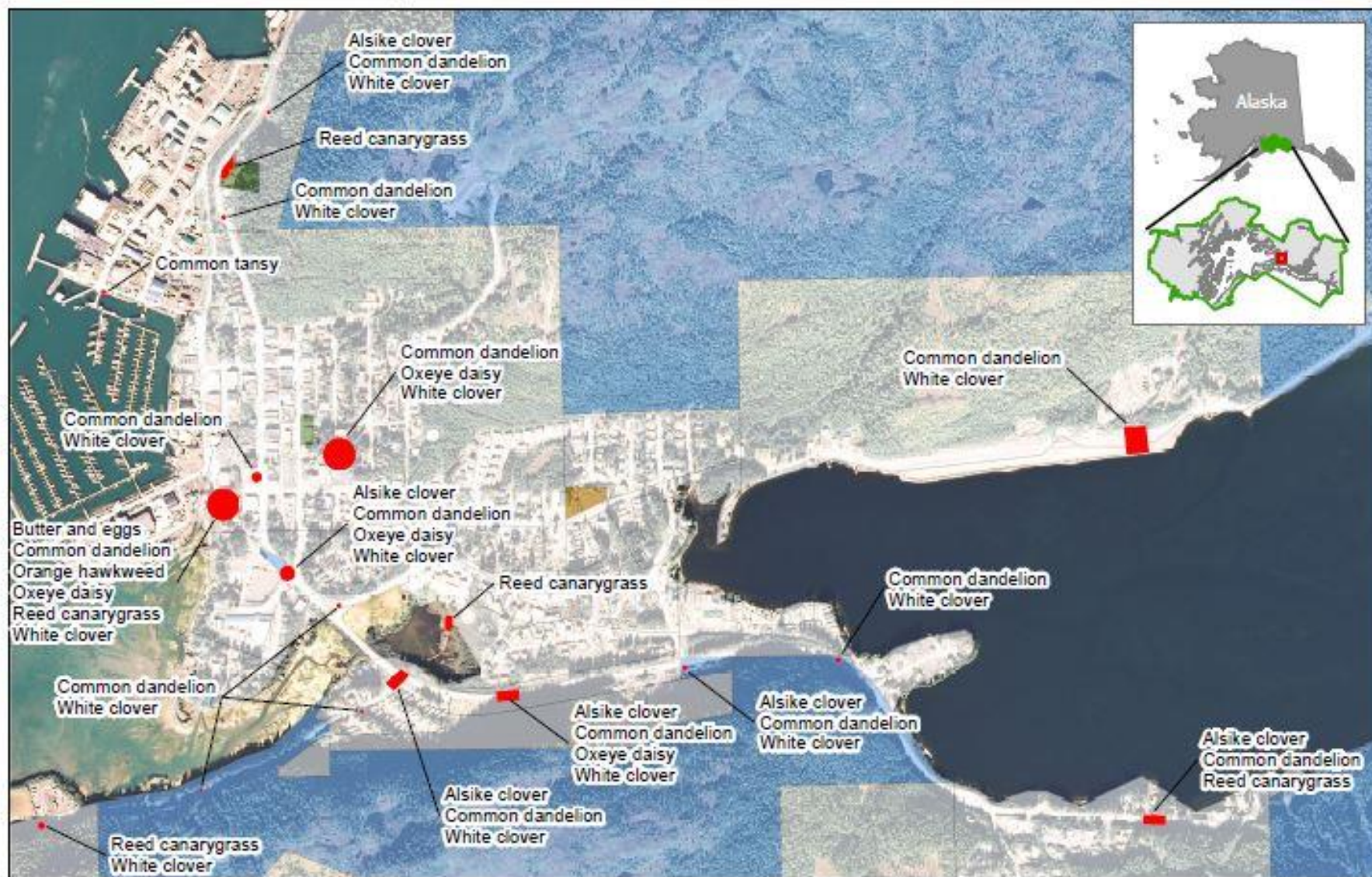


Scale 1:15,000  
December 1, 2016





# Invasive Species Known Locations - Cordova, AK - Downtown



**Landowner:**

National Forest	Privately Owned	Invasive species locations
State of Alaska	Chugach Alaska Native Corp.	

0 0.25 0.5 1 Miles

Scale 1:12,000  
December 1, 2016







Canada Thistle





A woman with a blue bandana and dark shirt is standing in a field of tall grass and ferns. She is smiling and looking towards the camera. The background features a dense forest of green trees and misty mountains.

Reed Canarygrass









# Invasive Species

## European Black Slug

**CLEAN AND INSPECT** all gear before departing to a new area.

**EUTHANIZE** by salting, beer traps, or stepping on slugs

**REPORT** new sightings to the Forest Service:

**1-877-INVASIV**



2mm



7 in



Check these places!









# KEEP ALASKA WILD

## STOP THE SPREAD OF INVASIVE SPECIES



Orange Hawkweed



Canada Thistle

Clean and inspect all gear and footwear prior to moving to a new area. Invasive plant seeds and slug eggs are easily transported unknowingly.

Inspect nooks and crannies where plant seeds, plant roots, and slug eggs can hitch hike.

Avoid disturbing areas with invasive plants.

To learn more about invasive species, go to:  
<https://www.uaf.edu/ces/pests/invasivespecies/>

Report Invasive species sightings to: 1-877-INVASIV



European Black Slug



Slug Eggs

Leopard Slug  
Photo Courtesy Carol Colquhoun









# In Summary:

- Prince William Sound harbors many species of rare and interesting plant life, especially in recently deglaciated areas
- These habitats are especially vulnerable to the introduction of invasive species
- Prevent invasive species introductions by cleaning and inspecting your gear regularly!
- Report any invasive species to the AK Weeds App or the US Forest Service
- iNaturalist is another tool to post cool plant (or other taxa) observations, and can help you with identifications

