



Regional Citizens' Advisory Council



Source: PWSRCAC

SERVS

Ship Escort / Response Vessel System

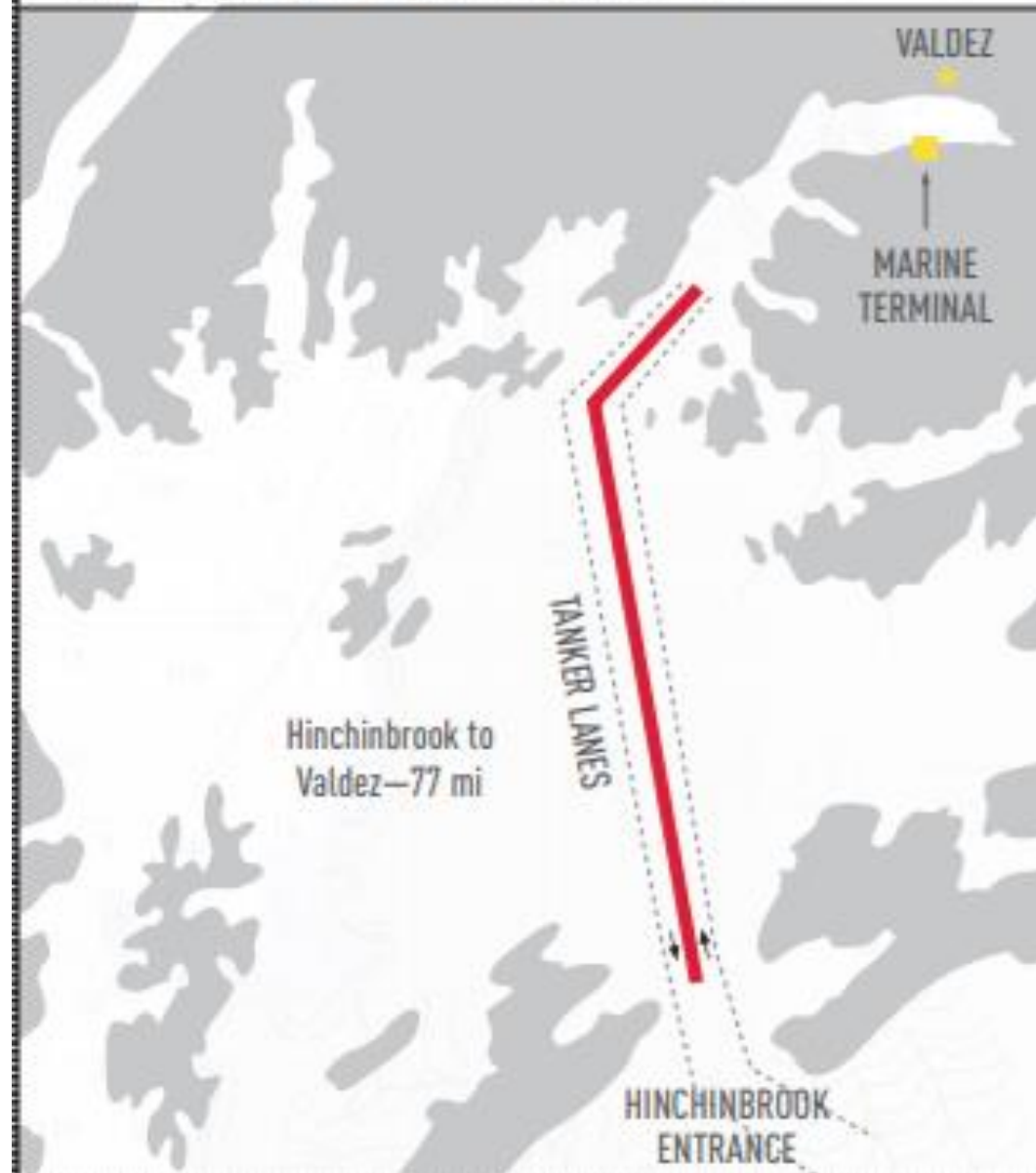


Source: Energy Information Administration (2006).



Source: Alaska Tanker Company Facebook Page (2013).

TANKER LANES



Source: Alyeska Pipeline Service Company 2018

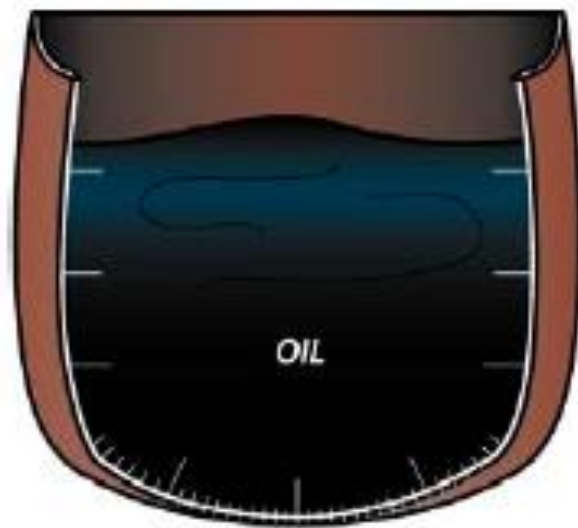


Prevention

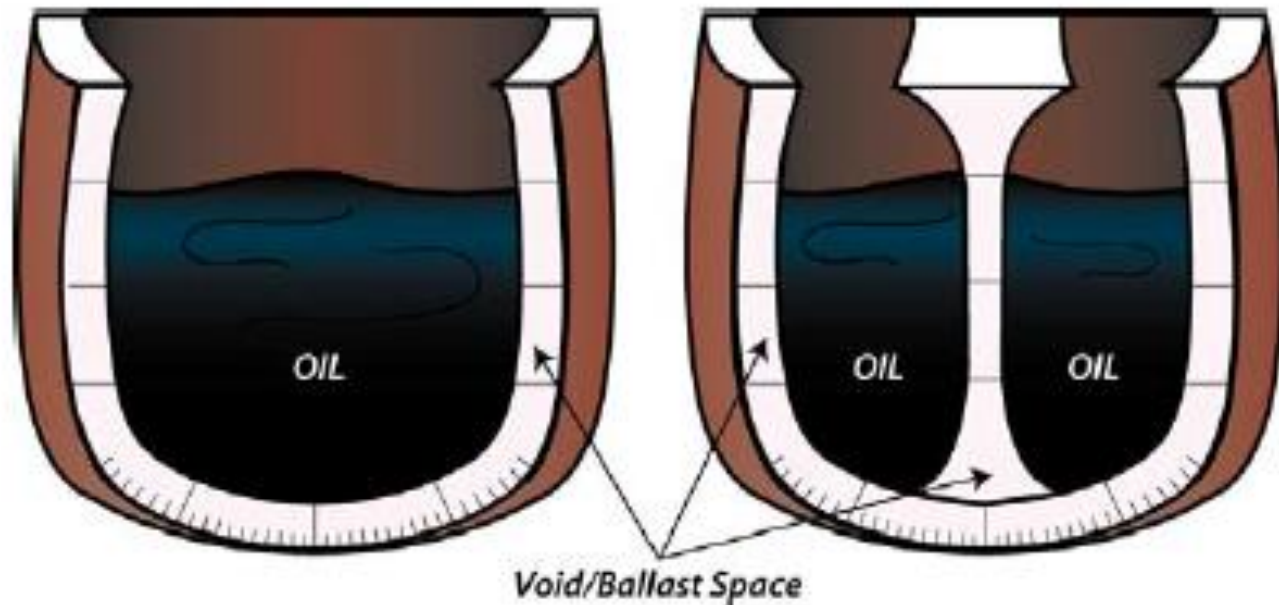


Source: PWSRCAC

A single hull tanker carries oil directly within the hull structure.



A double hull tanker has one or more tanks within the hull; there is a space between the tank wall (inner hull) and the ship's hull (outer hull).



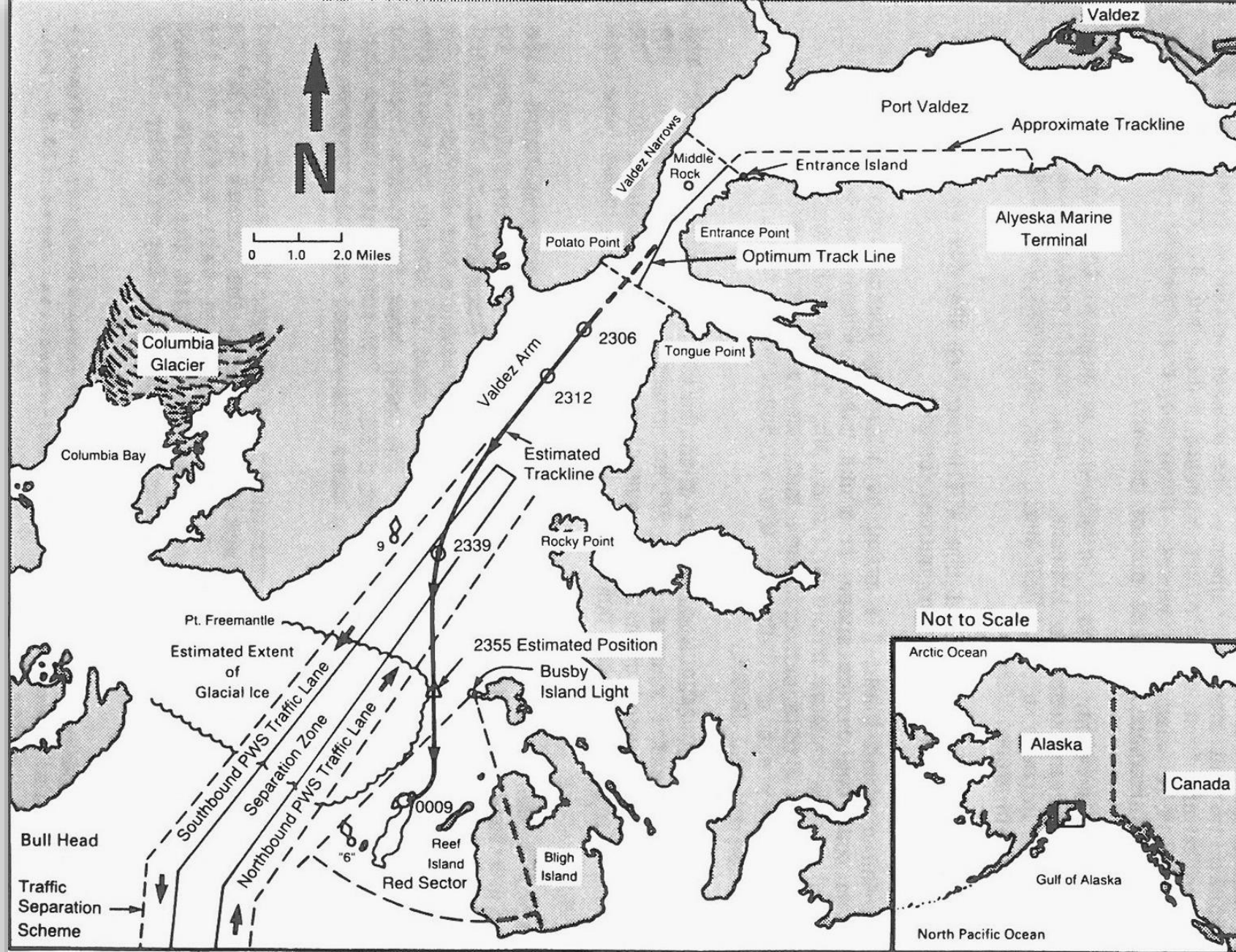


Figure 2.--Location of the accident.

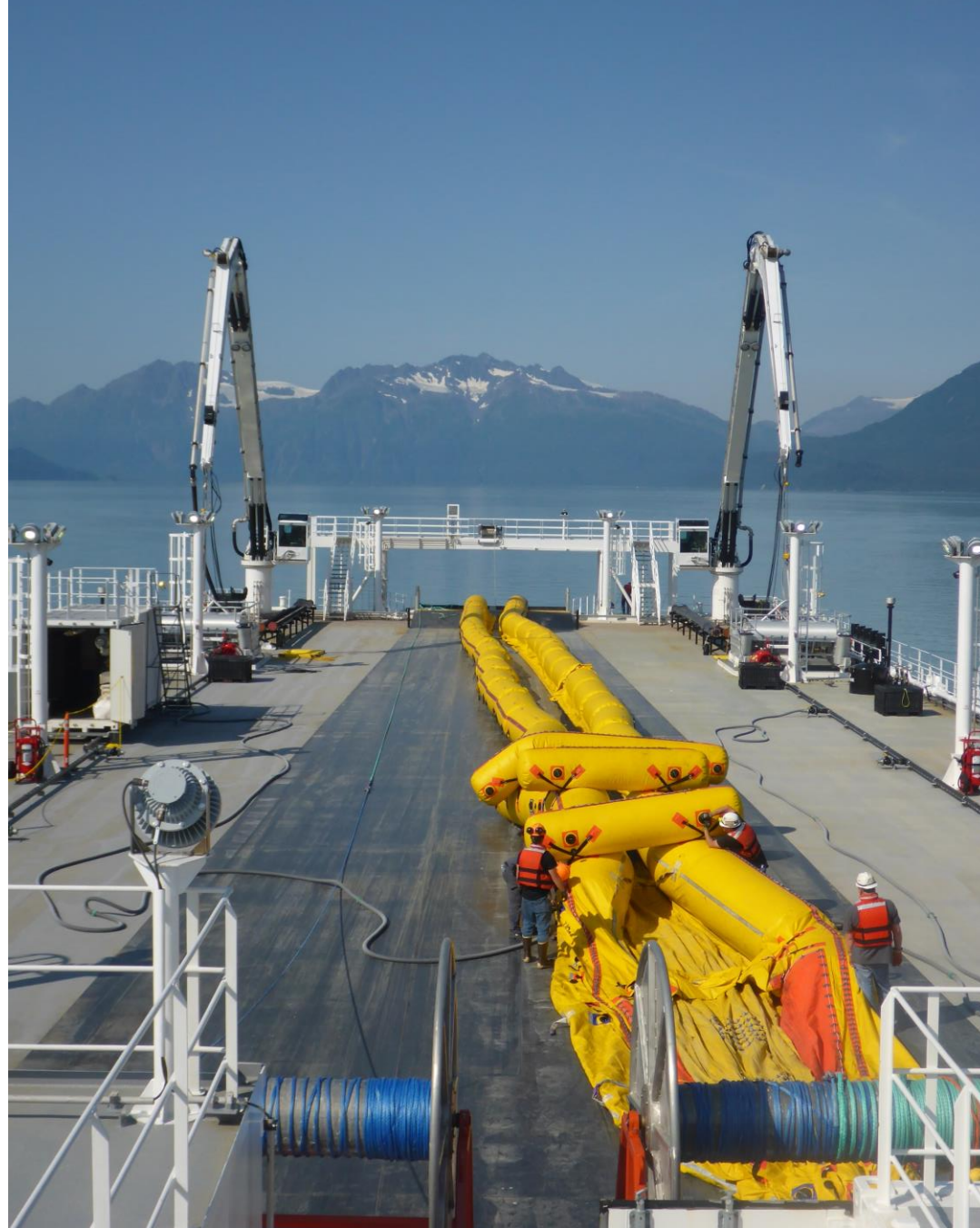


Source: PWSRCAC

Response



Source: PWSRCAC



Source: PWSRCAC



Source: PWSRCAC



Source: Wrangell Institute of Science and Environment



Source: PWSRCAC

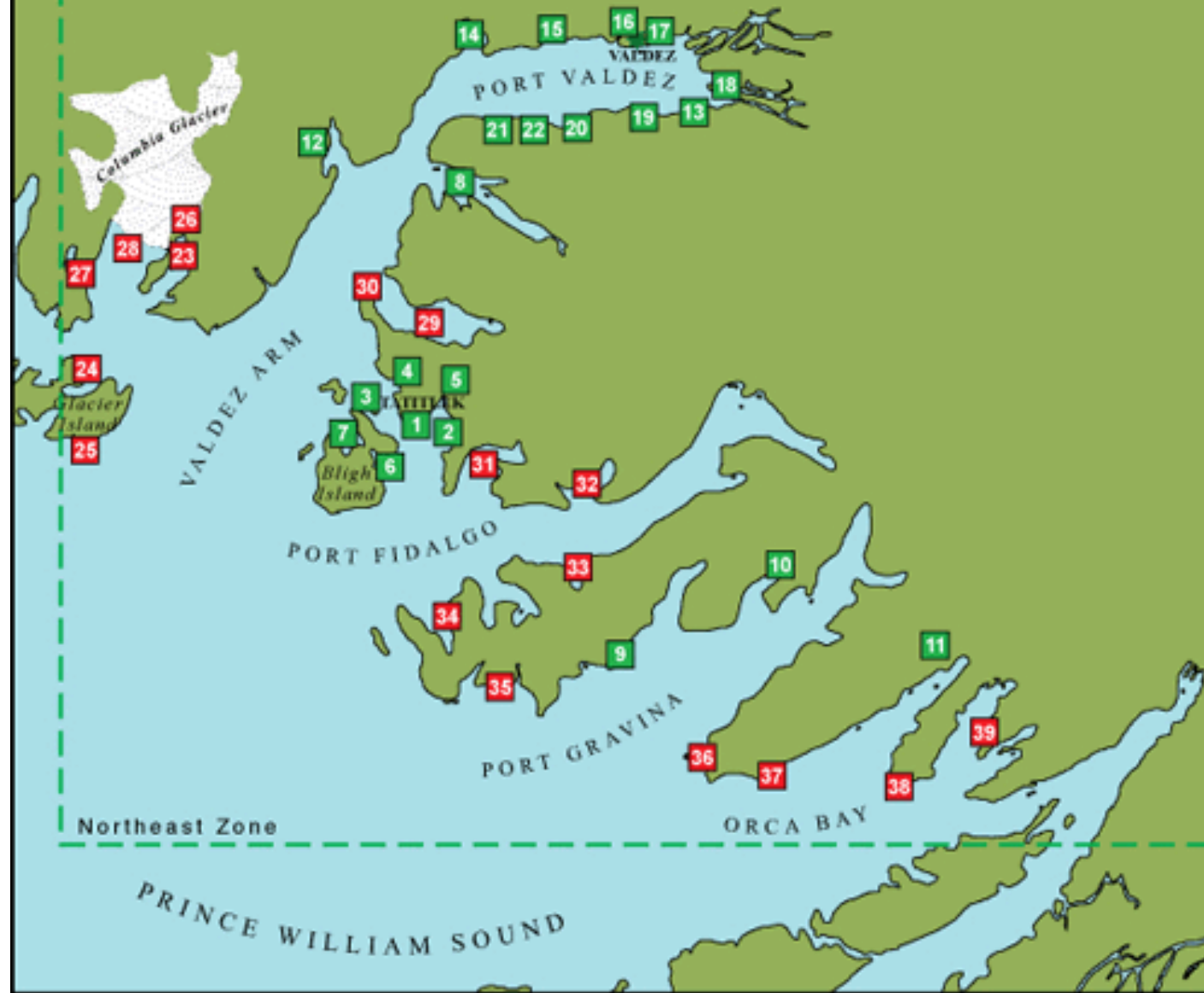


Source: PWSRCAC



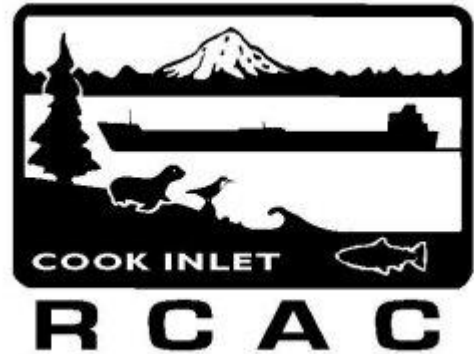
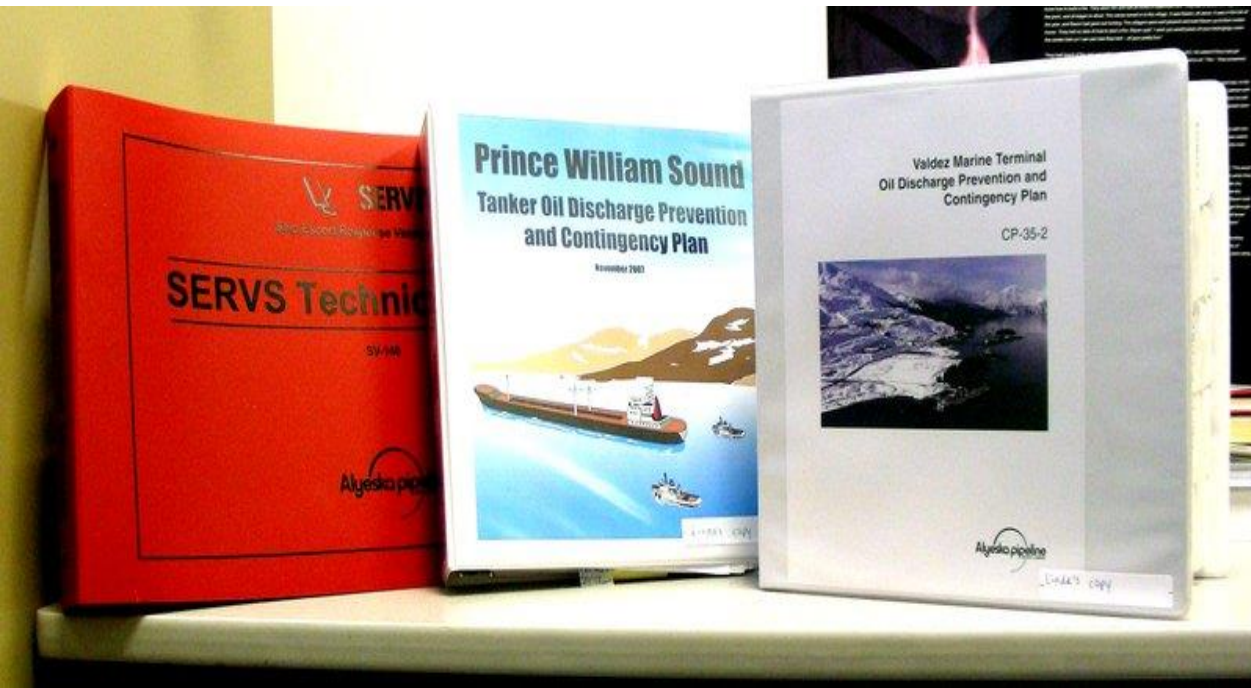
Source: PWSRCAC

Geographic Response Strategies





Behind the Scenes





Regional Citizens' Advisory Council